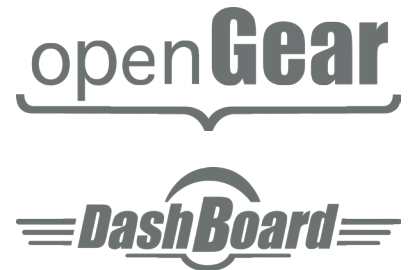
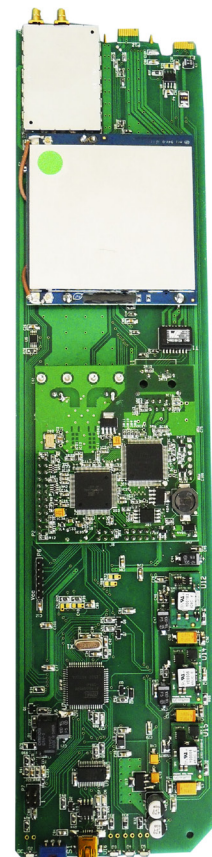
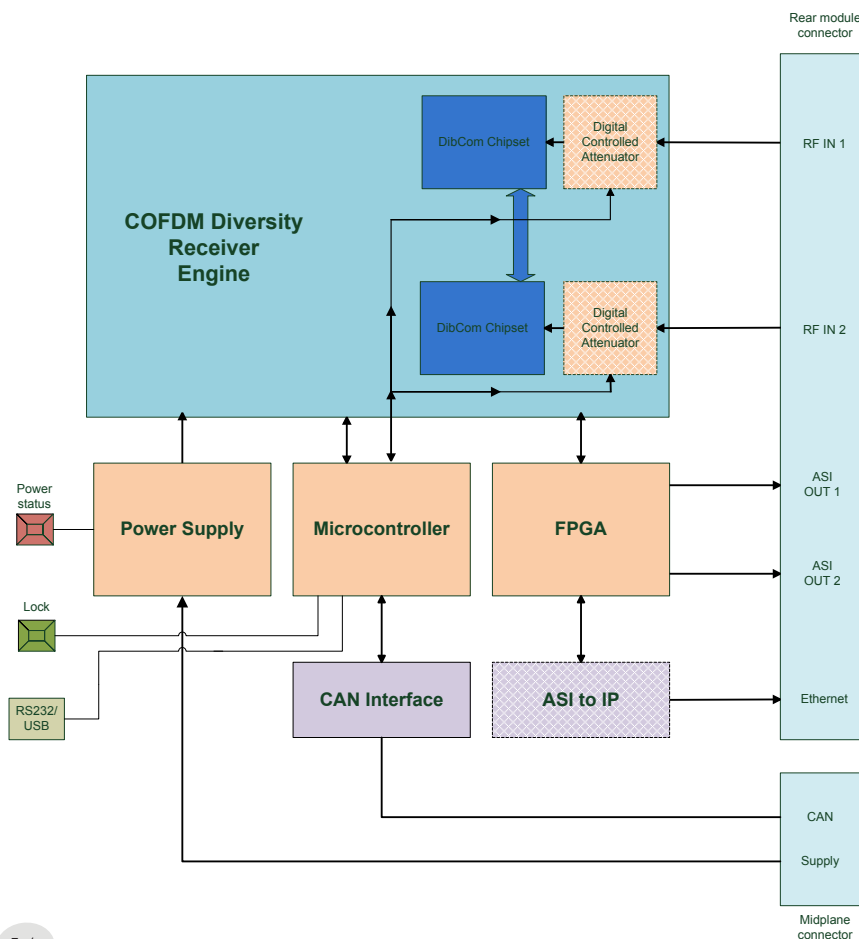


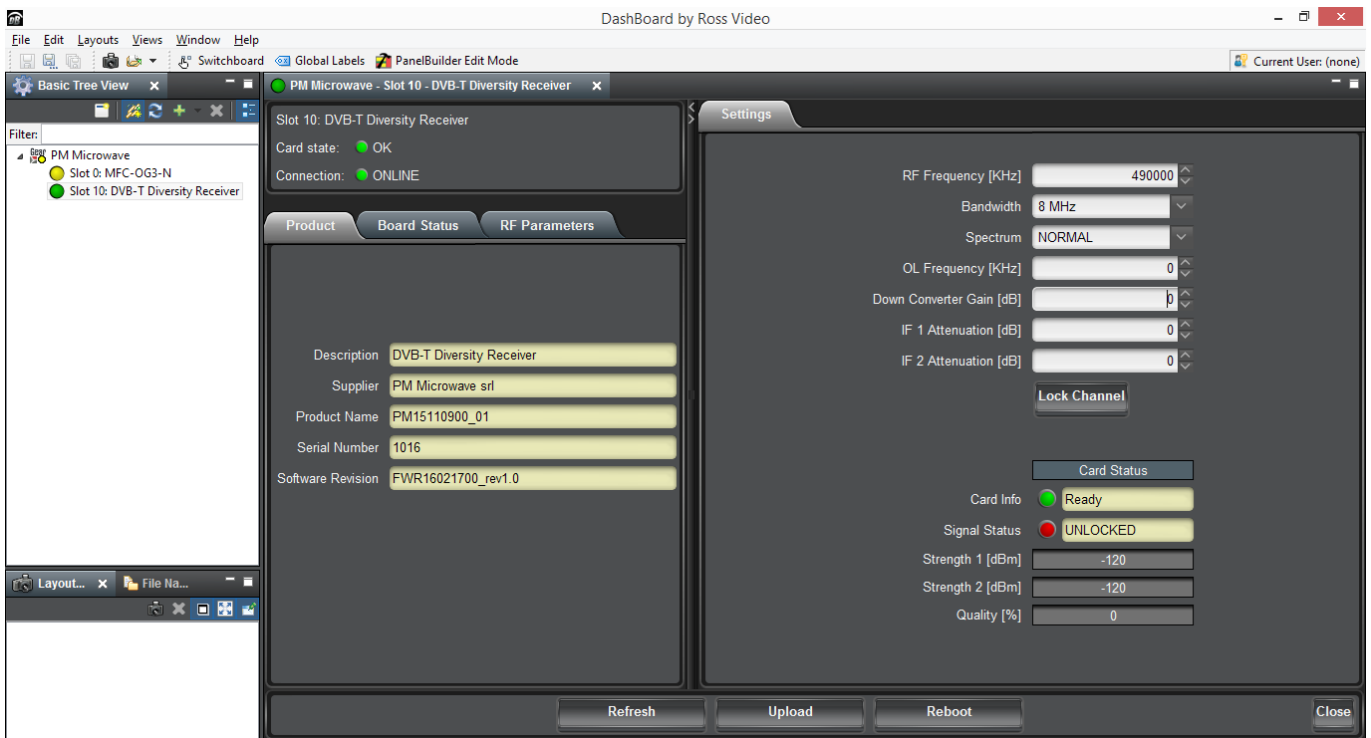
openGear® DVB-T DIVERSITY RECEIVER

OGDR



This product is a compact and powerful COFDM (DVB-T) diversity receiver and demodulator, equipped with dual ASI interface output and one ETHERNET connection. It is designed to easily fit into a standard openGear® 2RU frame, which allows a flexible, robust and powerful control of the board inserted. The card is equipped with a custom-design rear interface module that provide fast and reliable connection in order to achieve good radio performances.





▲ DashBoard control and monitoring system automatically recognizes connected boards and creates a custom easy-to-use interface

- ▶ Flexibility
- ▶ Easy board management
- ▶ Modular frame architecture
- ▶ Robust power supplies
- ▶ Advanced cooling system
- ▶ Ethernet remote control

TECHNICAL SPECIFICATIONS*

*specifications may be changed in accordance with the technical department

ELECTRICAL

DVB receiver standard	ETSI 300 744 DVB-T compliance
Reception freq. range	VHF-UHF band (160 MHz - 860 MHz)
Channel bandwidth	6, 7, 8 MHz
Modulation	QPSK, 16-QAM, 64-QAM
FFT mode	2K, 8K
Guard interval	1/32, 1/16, 1/8, 1/4
Code rate	1/2, 2/3, 3/4, 5/6, 7/8
RF sensitivity	-85 dBm typ (64-QAM)
Input RF attenuator (each input)	Digitally controllable, 30 dB range in 0.5dB step
Power supply	12Vdc through openGear® frame
Power consumption	5W typ.
Power supply @ RF inputs	12 Vdc, 250 mA each for down converter module

SOFTWARE

Local control	USB interface
Remote control	Ethernet connection with openGear® 2RU frame

MECHANICAL

RF input connector	2 x SMA female
ASI output connector	2 x BNC female
IP output connector	1 x RJ 45 (optional)
Dimensions	openGear® 2RU standard card
Weight	approx. 180 g

ENVIRONMENTAL

Operating temperature	0 ÷ +45 °C
Storage temperature	-20 ÷ +80 °C
Storage relative humidity	10% ÷ 80%
Protection degree	IP40