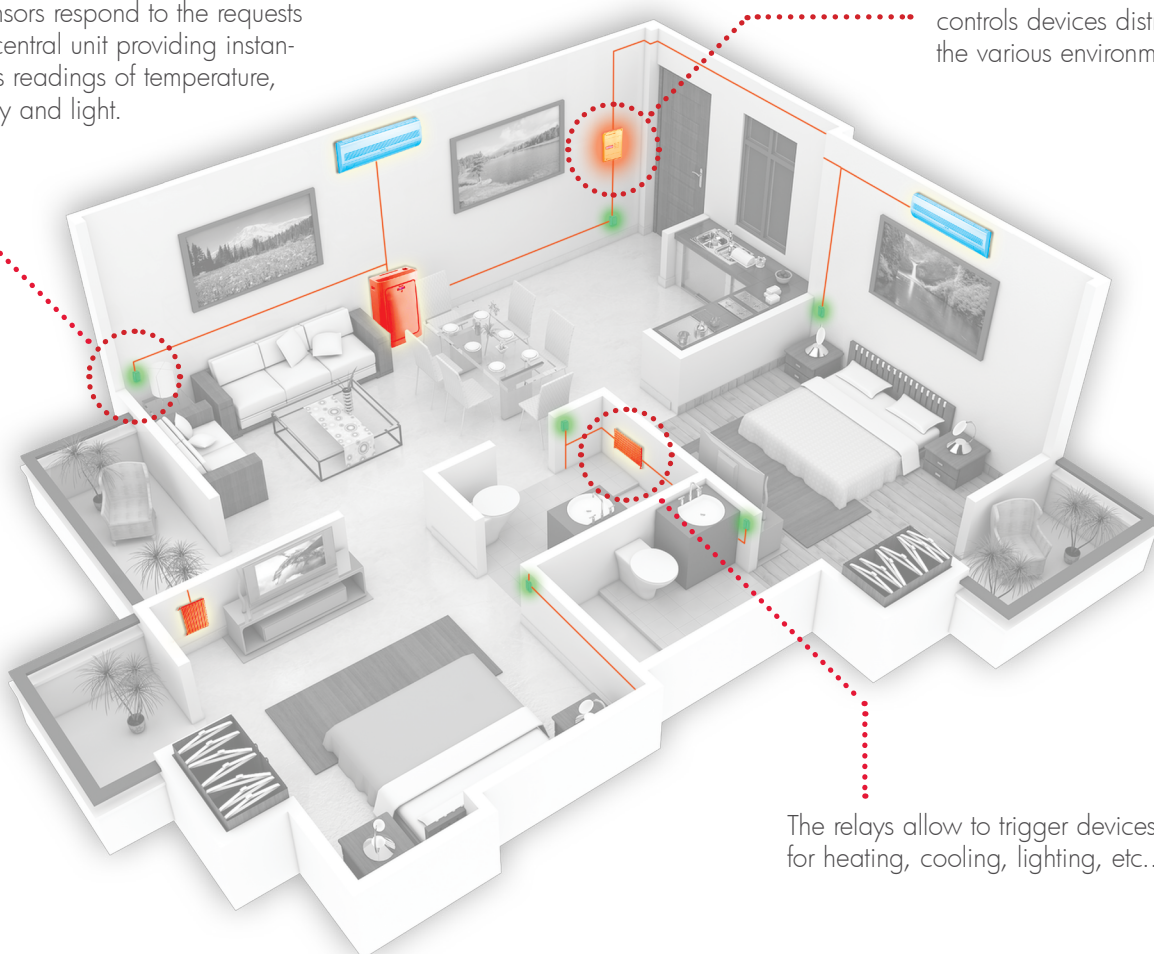


SESC

SMART ENERGY SYSTEM CONTROLLER

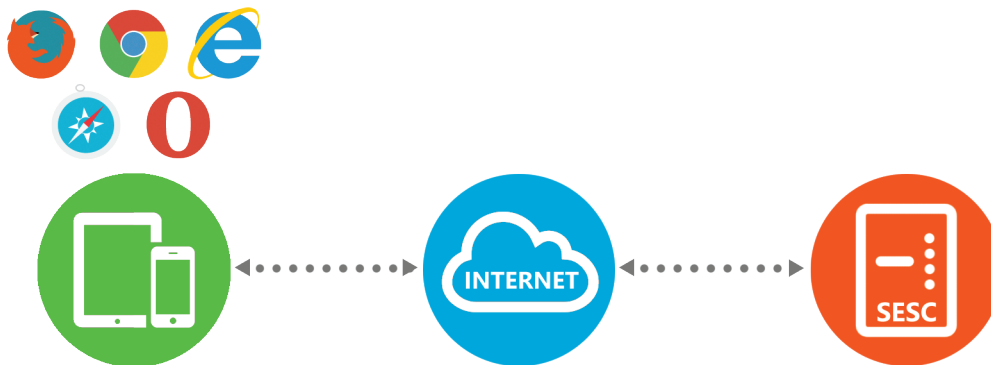
The Smart Energy System Controller allows you to intelligently manage the energy used in home and work environments, monitoring a number of sensors for temperature, humidity and light, and implementing control logic on windows, blinds, air conditioning, heating, lighting, etc.. The bus connection allows communication between devices and simplifies installation. The central unit collects at predefined intervals the sensor readings, which are periodically downloaded from a remote server via Internet. The user can then interact with the system via PC, smartphone or tablet viewing current and historical data and setting the logic of automated management.

The sensors respond to the requests of the central unit providing instantaneous readings of temperature, humidity and light.

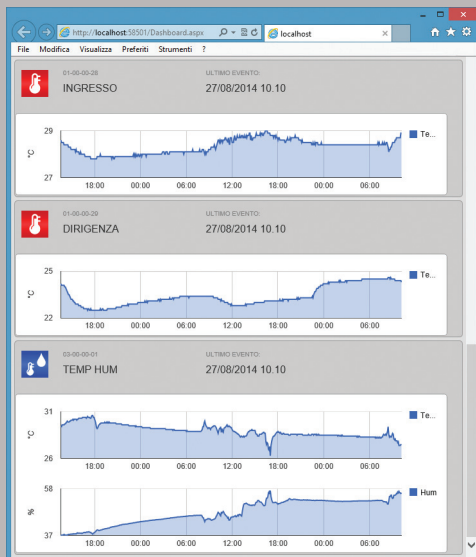


The central unit monitors and controls devices distributed in the various environments.

The relays allow to trigger devices for heating, cooling, lighting, etc..



▲ The management of the SESC systems installed is independent of the operating system: you just need a browser that supports HTML5.



- ▶ Real-time control from PCs, tablets and smart phones through a web browser
- ▶ Login with secure authentication
- ▶ Different privileges (user, installer, service provider)
- ▶ Add, remove, and edit new or existing sensors and relays
- ▶ View and download current and historical data by selecting a date range
- ▶ Setting thresholds and profiles implementation for automated management system
- ▶ Flexible and customizable system