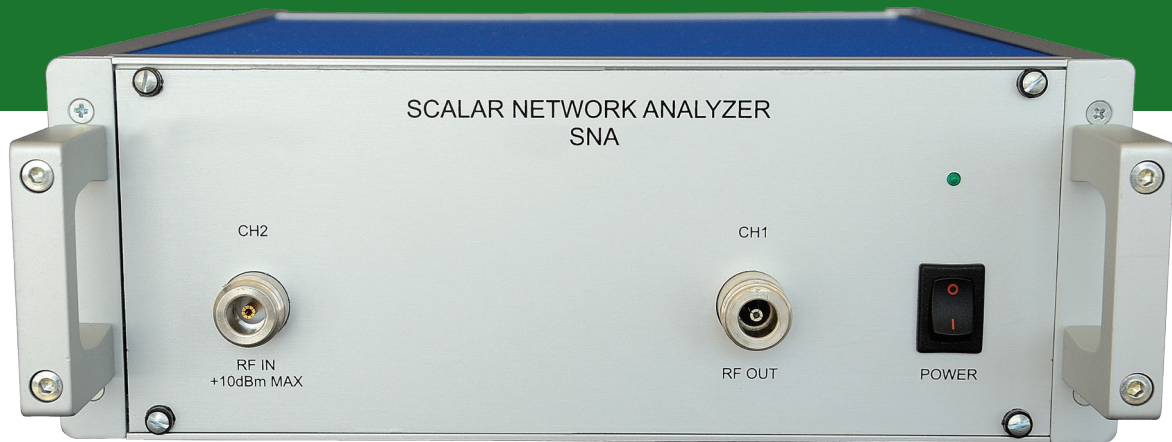


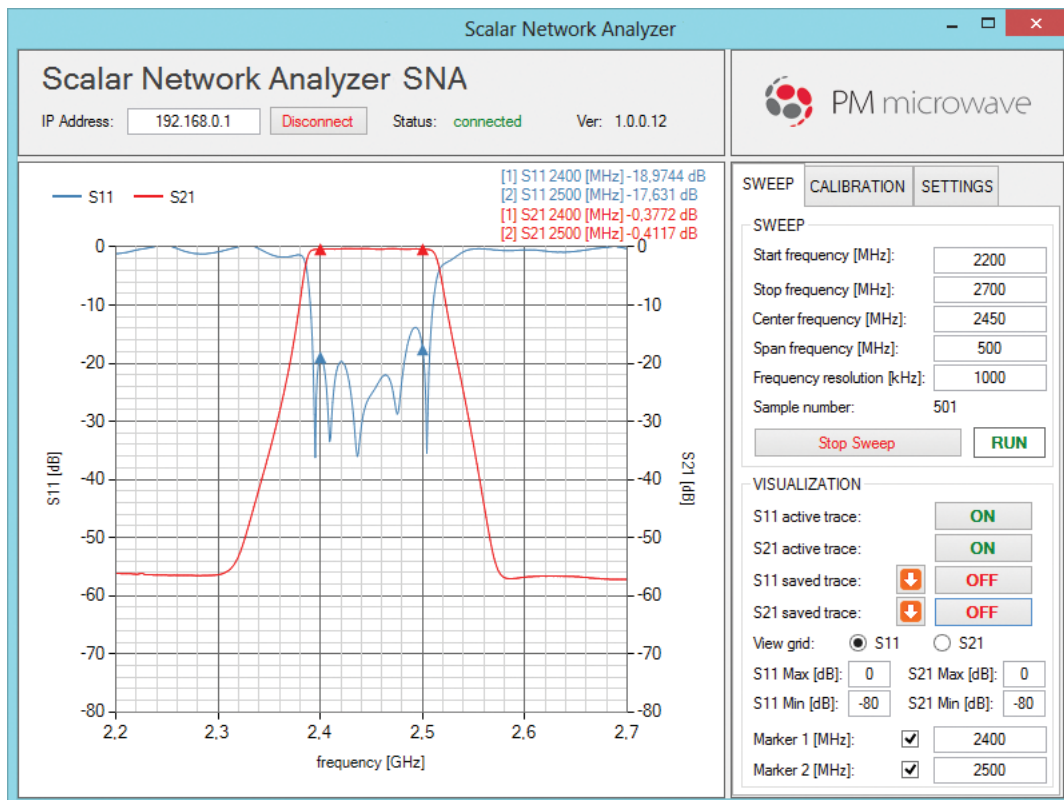
SNA

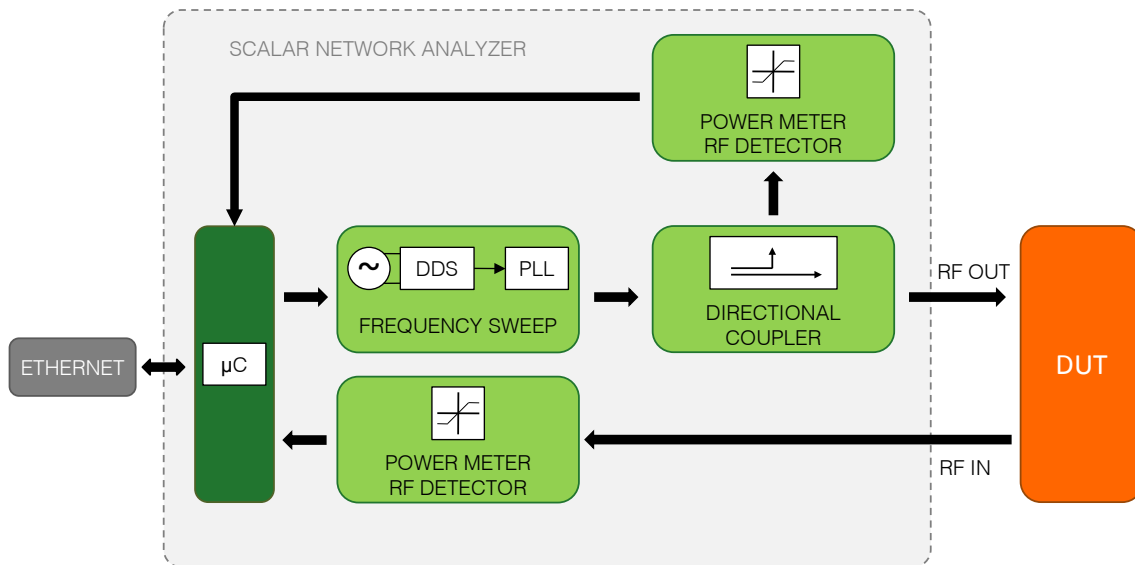
SCALAR NETWORK ANALYZER



The Scalar Network Analyzer is a compact stand-alone product that integrates the module NBA, thus allowing to characterize 2-port networks or devices. This product is extremely competitive for narrow band applications and in particular for measurements on the field.

The interface software, supplied with the unit (see image below), allows to view in real time the frequency response of the device to be measured in terms of scattering parameters S_{11} (return loss) and S_{21} (insertion loss). Among the various peculiarities, stand a chance to set the sweep parameters up to a maximum of 10000 points, to calibrate the instrument and to export the traces of the S_{11} and S_{21} responses in graphical and textual.





▲ Block diagram of the Scalar Network Analyzer

TECHNICAL SPECIFICATIONS*

*specifications may be changed in accordance with the technical department

SCALAR ANALYZER

Frequency range	0.5 ÷ 3.5 GHz in sub-bands (others on request)
Input level	10 dBm max
Output level	7 dBm
Level flatness	1 dB
Dynamic range	60 dB
Accuracy	± 1 dB over 60 dB of dynamic range
Resolution	16 bit
Number of acquisitions	20 sweep/sec

GENERAL

Connectors	2 × N female 50 Ω
Communication interface	Ethernet 10baseT – TCP/IP
Power supply	110 ÷ 240 Vac 12, 15, 24 o 48 Vdc
Power consumption	typ. 6 W
Operating temperature	-10 ÷ +45 °C
Storage temperature	-20 ÷ +80 °C
Storage relative humidity	10% ÷ 80%
Dimensions	240 × 110 × 320 mm
Weight	3.5 kg
Protection degree	IP50